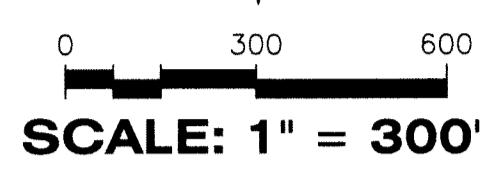


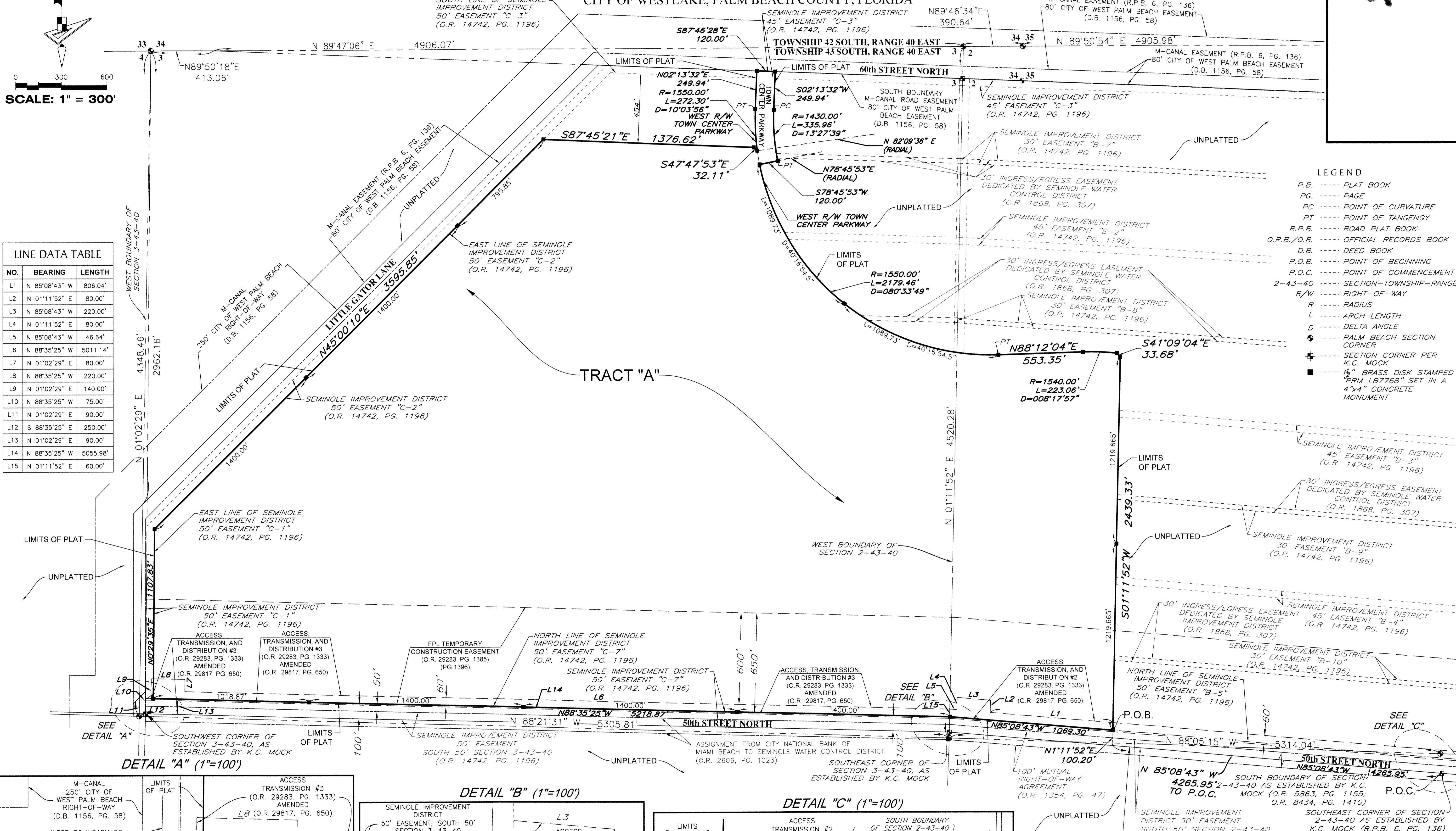
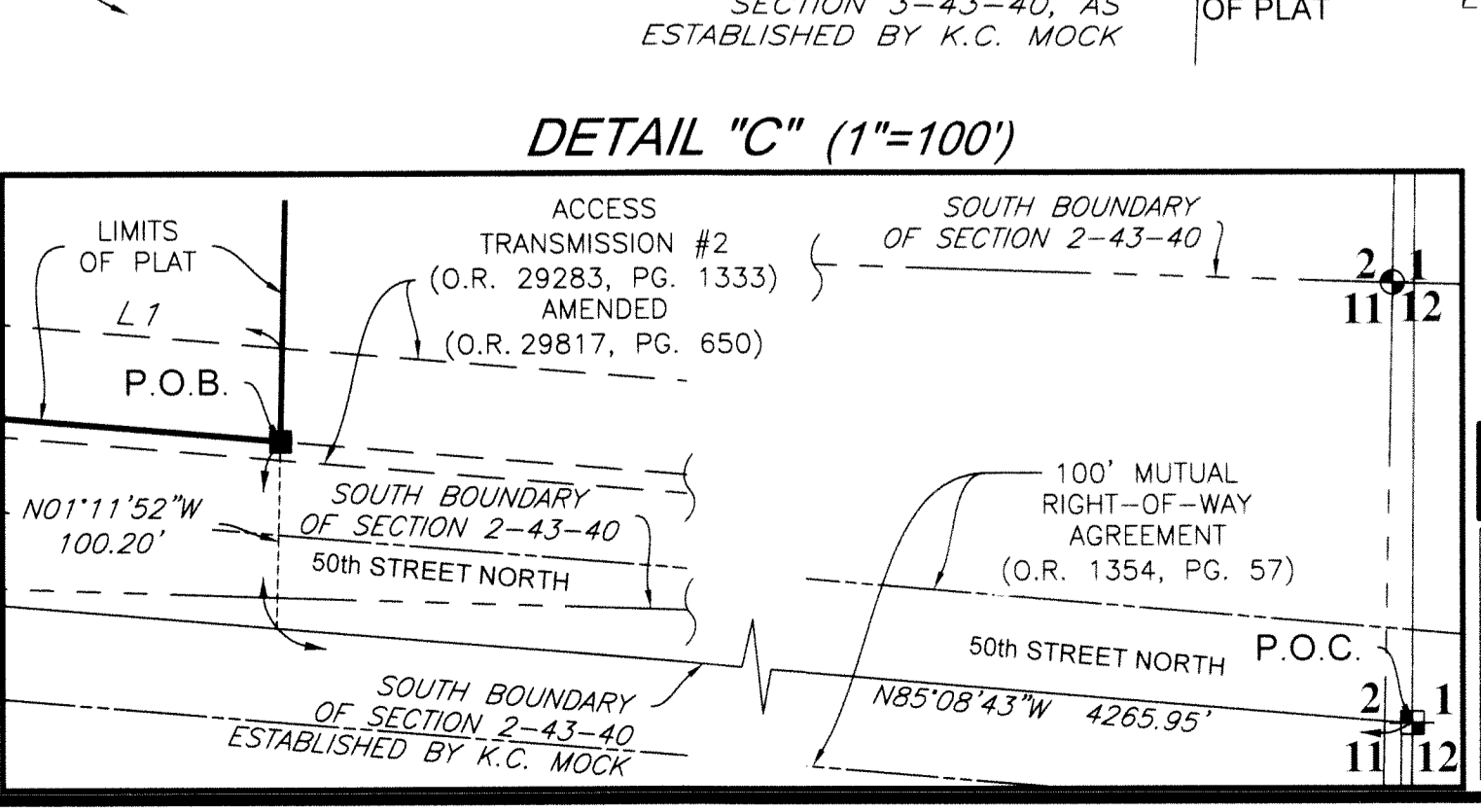
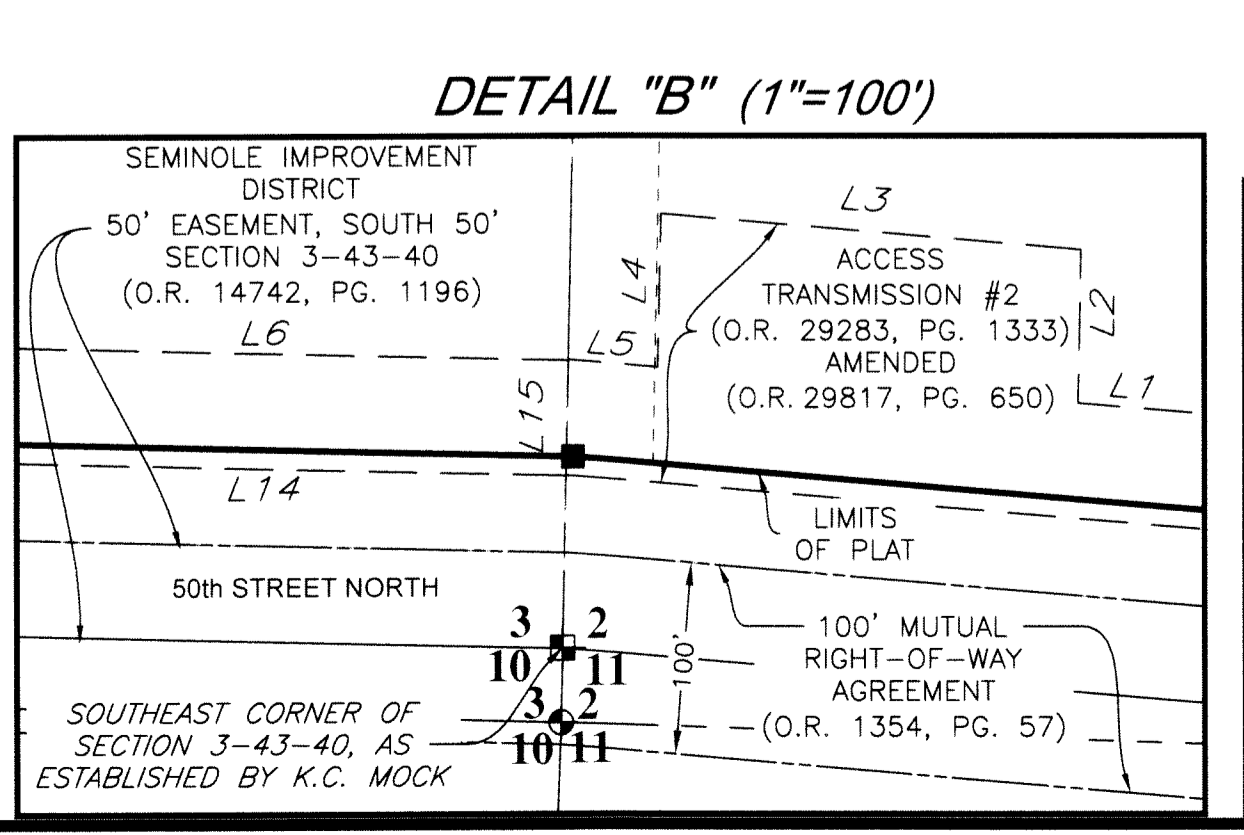
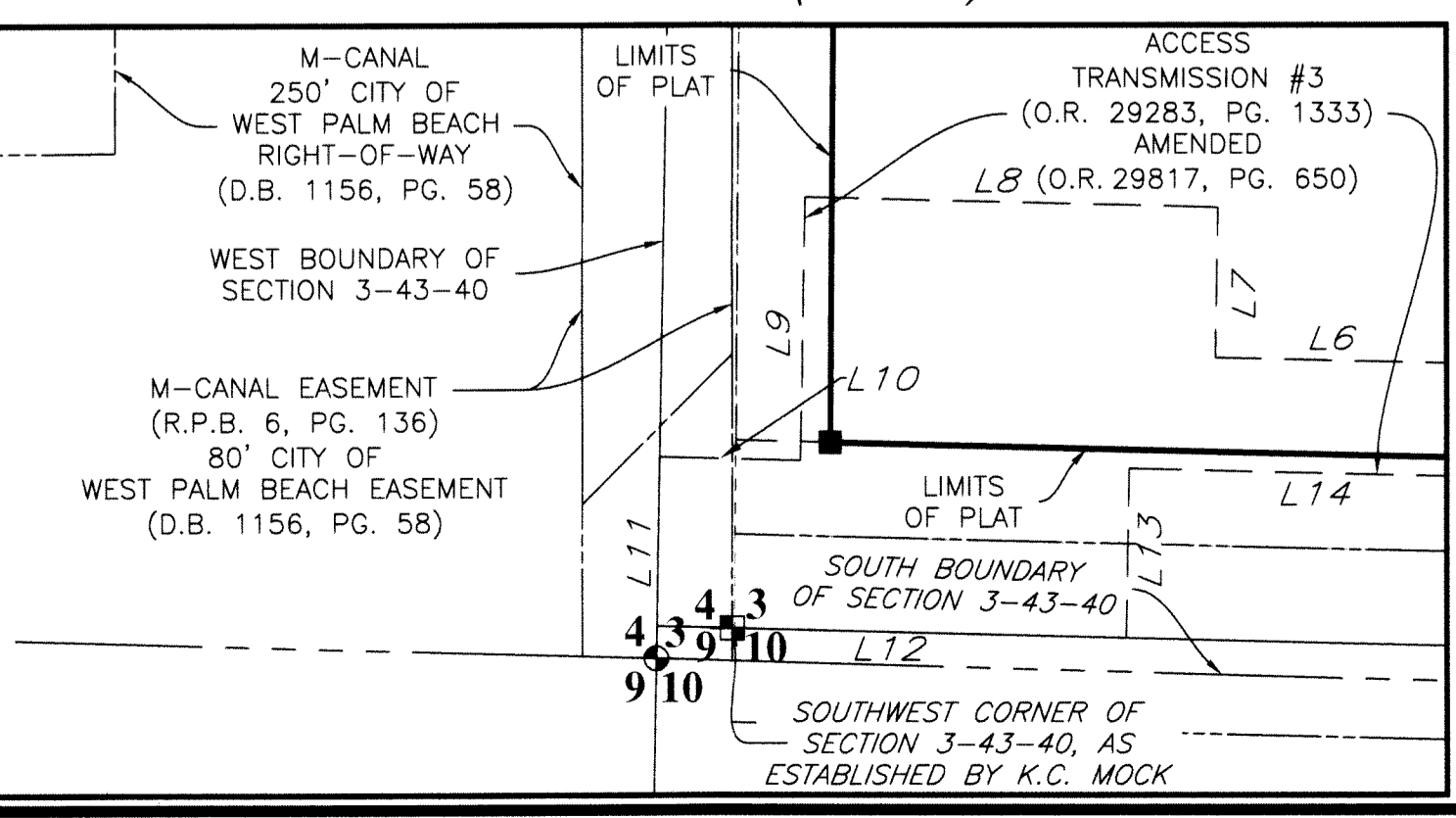
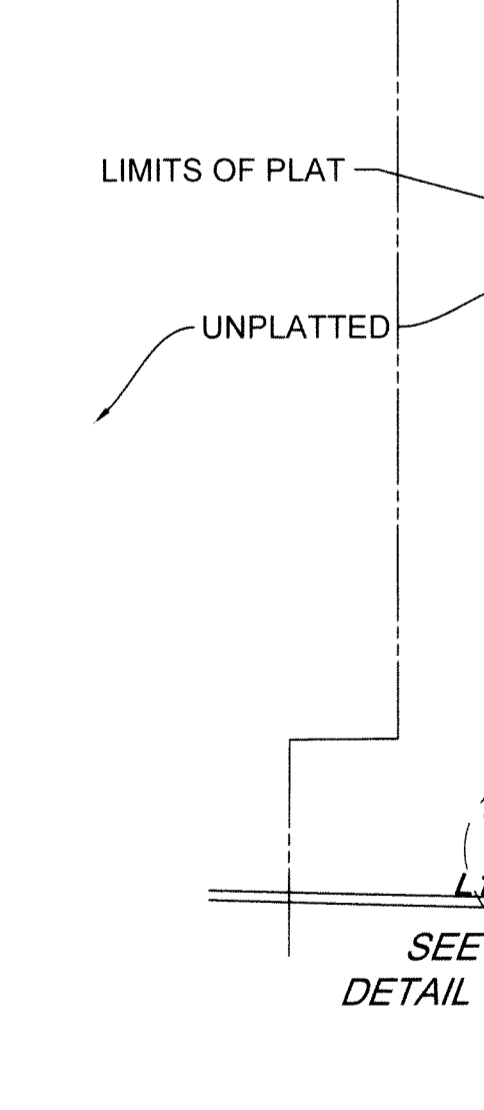
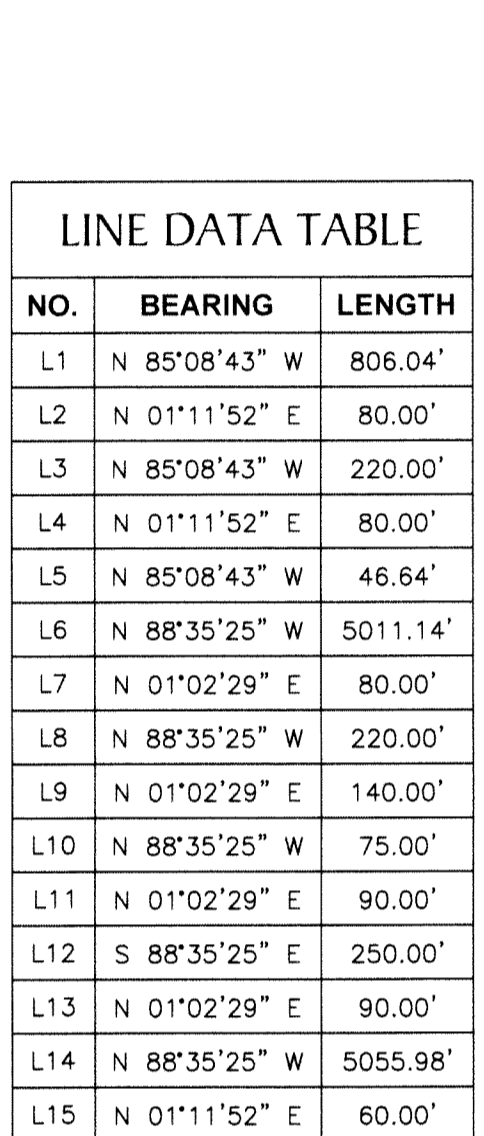
FPL WESTLAKE SOLAR ENERGY CENTER

BEING A PLAT OF A PORTION OF
SECTION 2, TOWNSHIP 43 SOUTH, RANGE 40 EAST,
AND SECTION 3, TOWNSHIP 43 SOUTH, RANGE 40 EAST,
CITY OF WESTLAKE, PALM BEACH COUNTY, FLORIDA

25



LINE DATA TABLE		
NO.	BEARING	LENGTH
L1	N 85°08'43" W	806.04'
L2	N 01°11'52" E	80.00'
L3	N 85°08'43" W	220.00'
L4	N 01°11'52" E	80.00'
L5	N 85°08'43" W	46.64'
L6	N 88°35'25" W	5011.14'
L7	N 01°02'29" E	80.00'
L8	N 88°35'25" W	220.00'
L9	N 01°02'29" E	140.00'
L10	N 88°35'25" W	75.00'
L11	N 01°02'29" E	90.00'
L12	S 88°35'25" E	250.00'
L13	N 01°02'29" E	90.00'
L14	N 88°35'25" W	5055.98'
L15	N 01°11'52" E	60.00'



LEGEND

- P.B. --- PLAT BOOK
- PG. --- PAGE
- PC --- POINT OF CURVATURE
- PT --- POINT OF TANGENCY
- R.P.B. --- ROAD PLAT BOOK
- O.R.B./O.R. --- OFFICIAL RECORDS BOOK
- D.B. --- DEED BOOK
- P.O.B. --- POINT OF BEGINNING
- P.O.C. --- POINT OF COMMENCEMENT
- 2-43-40 --- SECTION-TOWNSHIP-RANGE
- R/W --- RIGHT-OF-WAY
- R --- RADIUS
- L --- ARCH LENGTH
- Δ --- DELTA ANGLE
- ⊙ --- PALM BEACH SECTION CORNER
- ⊕ --- SECTION CORNER PER K.C. MOCK
- --- 1 1/2" BRASS DISK STAMPED "PRM LB7768" SET IN A 4"x4" CONCRETE MONUMENT

BASIS OF BEARING
SOUTH LINE OF SECTION 2, TOWNSHIP 43 S., RANGE 40 E. (N. 85°08'43"W.)

SEE NOTE ON SHEET 1 OF 2 FOR BASIS OF BEARINGS

NOTICE: THIS PLAT, AS RECORDED IN ITS GRAPHIC FORM, IS THE OFFICIAL DEPICTION OF THE SUBDIVIDED LANDS DESCRIBED HEREIN AND WILL IN NO CIRCUMSTANCES BE SUPPLANTED IN AUTHORITY BY ANY OTHER GRAPHIC OR DIGITAL FORM OF THE PLAT. THERE MAY BE ADDITIONAL RESTRICTIONS THAT ARE NOT RECORDED ON THIS PLAT THAT MAY BE FOUND IN THE PUBLIC RECORDS OF THIS COUNTY.

GeoPoint
Surveying, Inc.

4152 W. Blue Heron Blvd. Phone: (561) 444-2720
Suite 105 www.geopointsurvey.com
Riviera Beach, FL 33404 Licensed Business Number LB 7768

SHEET 2 OF 2 SHEETS